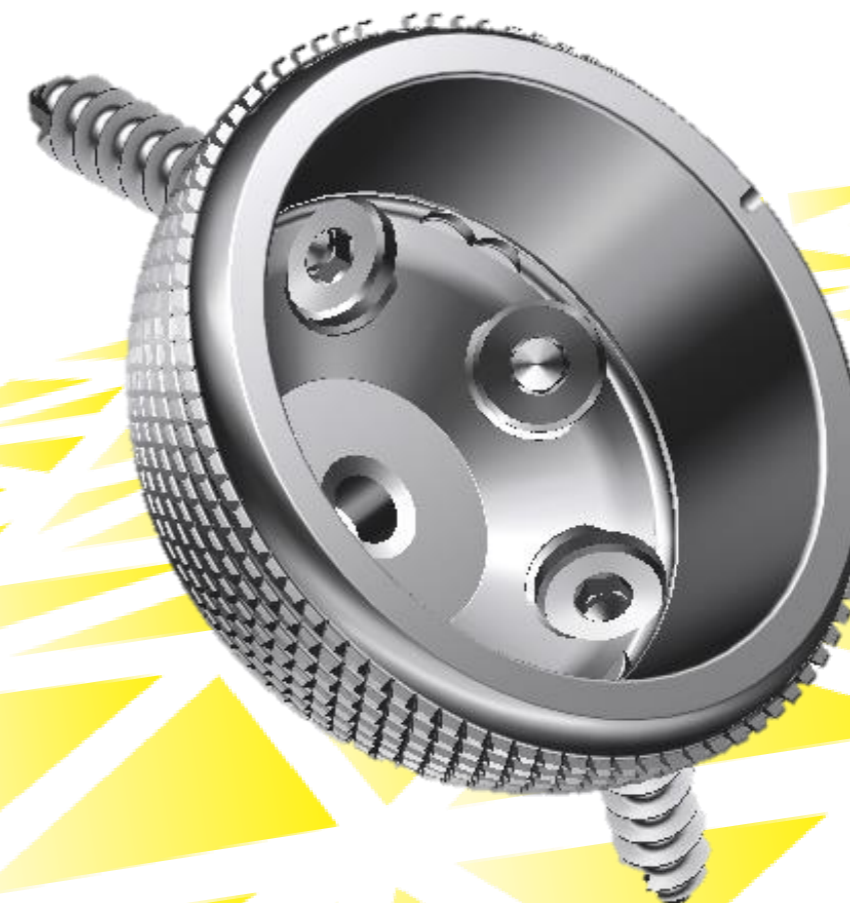




3- Hole Revision Shell with Pole- und Plug-Screws		PE-Insert	PE-Insert x-linked		PE-Insert x-linked Antilux		Ceramic Insert
Size / Code	Article- Number	Head-Ø / Code Art. No.	Head-Ø / Code Art. No.		Head-Ø / Code Art. No.		Head-Ø / Code Art. No.
	Dual Phase coated						
46 / E 48 / E 50 / E	321083 321084 321085		32 / E 332002		32 / E 332007		32 / E 120210
52 / F 54 / F 56 / F	321086 321087 321088	32 / F 331003	32 / F 332011	36 / F 332003	32 / F 332014	36 / F 332008	36 / F 120380
58 / G 60 / G	321089 321090	32 / G 331004	32 / G 332012	36 / G 332004	32 / G 332015	36 / G 332009	36 / G 120400
62 / H 64 / H 66 / H 68 / H 70 / H	321091 321092 321093 321094 321095	32 / H 331005	32 / H 332013	36 / H 332005	32 / H 332016	36 / H 332010	36 / H. 120420

# Pyramid Revision-Cup

3 holes / uncemented / Dual Phase Coating



**Atesos medical AG**  
Schachenallee 29  
CH-5001 Aarau

CE 1250



Lit.Nr.: 501.E003-A1

Edition: 04/19-EN



www.atesos.ch

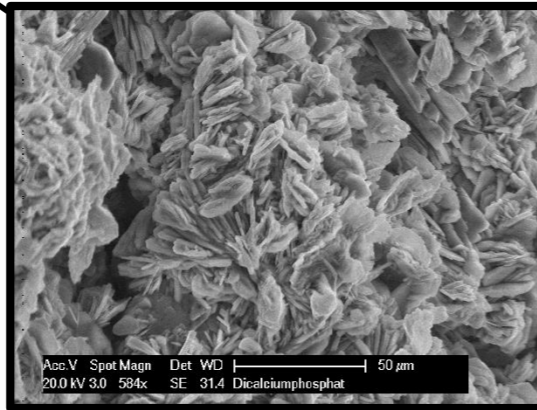
## Shell

**Sizes:**  
46, 48, 50, ..., 70



**Screw Holes:**  
3 additional Bone-Screws

**Coating:**  
Titanium-Plasma &  
Dicalciumphosphate  
Roughness: 25-35µm



**Plug- Screw:**  
Pre-assembled  
Hermetically sealed



## Bone Screws

	<b>Material</b>	ISO 5832-3 (Ti6Al 4V)
	<b>Thread</b>	ø6.5mm Self- tapping
	<b>Length</b>	25, 30, 35, 40, 45mm (other length in request)
	<b>Packaging</b>	sterile

## Additional Instruments



**Screw Gauge**  
- bended



**Drill- Guide**  
Drill Diameter 3.2mm



**Flexible shaft**  
various drill length



**Screw holding clamp**



**Cardanic-Screw driver**  
SW 3.5